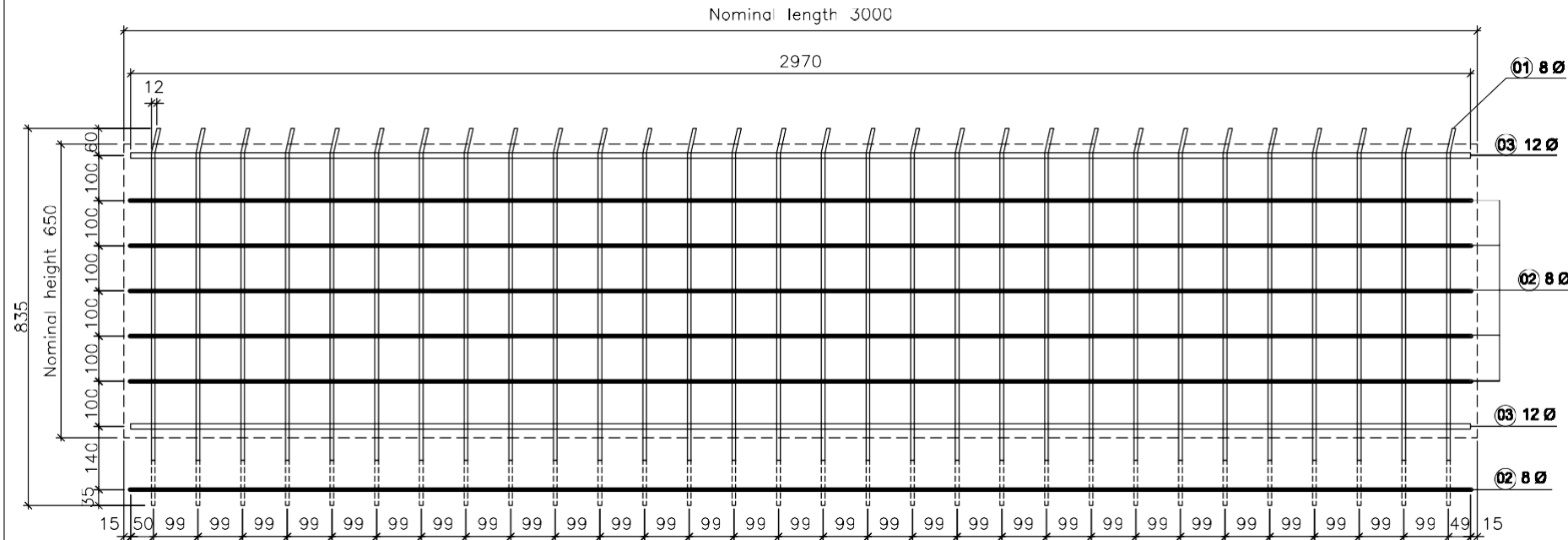
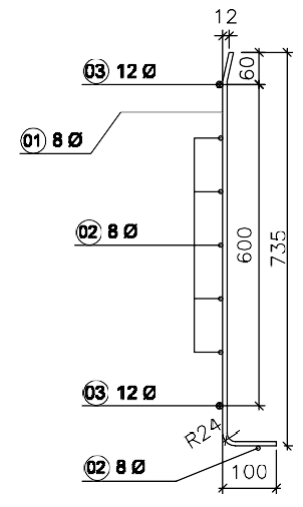


BAR NUMBERS & WEIGHT			
	LENGTH	DIA	NUMBER
01	835	8Ø	30
02	2970	8Ø	06
03	2970	12Ø	02
"TB" AREA:- 1.950 m ² WEIGHT:-22.216 kg			



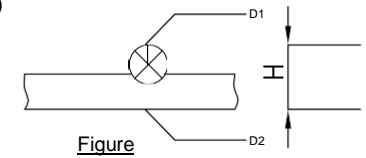
ELEVATION STANDARD PANEL "TB"



VIEW-A

SPECIFICATIONS:-

Steel specification Hard drawn steel wire grade B500B or B550C complying with EN 10080 alternative SAE 1010/1018 and hot dip galvanizing to IS:2629:1985.

- MECHANICAL PROPERTIES :-**
 -Tensile strength : 450 MPa (minimum)
 -Yield stress : 350 MPa (minimum)
 -Elongation : 10 % (minimum).
- CHEMICAL PROPERTIES :-**
 -Si : 0.30%(maximum)
 -C : 0.08%-0.2%
 -Mn : 0.30%-0.9%
 -S : 0.05% (maximum)
 -P : 0.04% (maximum)
- WELDING CHECKING:-**
 Welding joint of wires should be interpenetration between 12% and 15% of the total diameter of the welded wire.Total height of the welded bars $H \leq (1-0.12) \times (D1+D2)$

- COATINGS :-**
 Hot dip galvanized zinc coating 610 g/sq.m (i.e. approx. 85 microns per face)
 -The assembly should be ground fettled and shot/sand blasted to ensure sand/Graphite free part & pretreated to achieve perfect HD ZINC Galvanization. The process to follow-
 I) Cleaning - Degrease followed by hot water rinse
 II) Pickling - followed by water rinse
 III) Fluxing - followed by heating
 IV) zinc bath - followed by water dip
 V) Inspection

NOTES :-

- All dimensions are in mm or otherwise stated.
- Tolerance on overall length and width=±2mm.
- This panel design shall be used only for wall with inclination equal to 90°